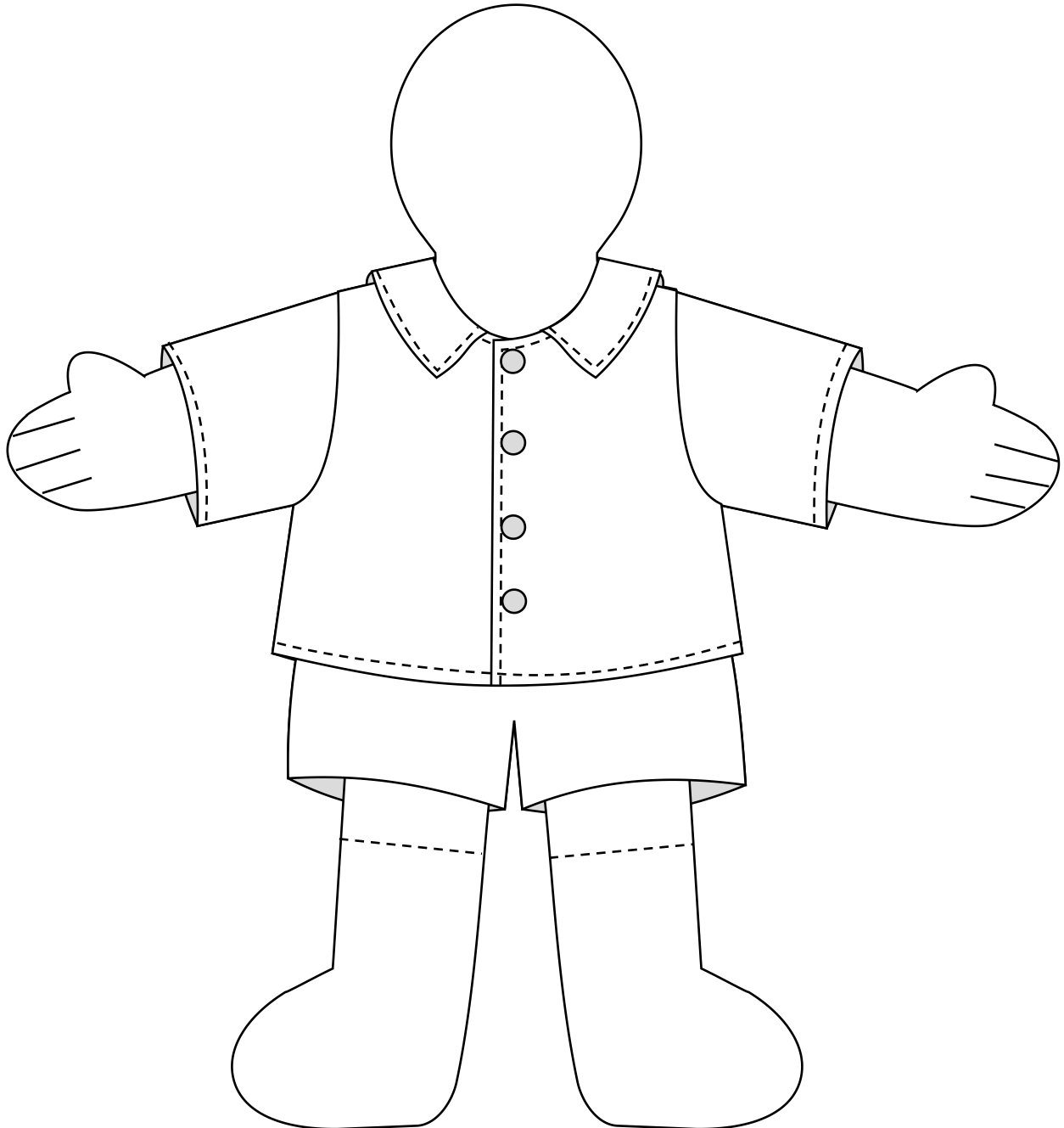


# How to...

## Basic Rag Doll Shirt Tutorial

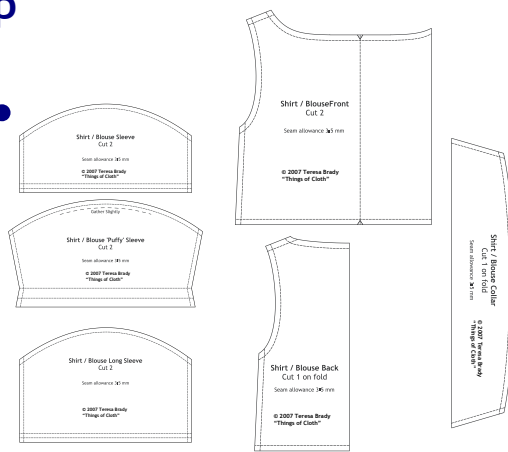
© 2007 Teresa Brady  
"Things of Cloth"



# make a simple doll shirt

## Step

# 1.



**Diagram 1**

## Cut out the pattern pieces:

Cut 1 of the shirt back on the fold.

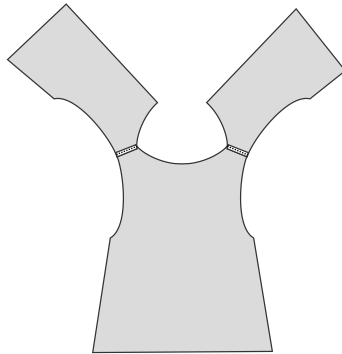
Cut 2 of the shirt front.

Cut 2 of the sleeves (after choosing what style of sleeve you want!).

You should have what is shown in **Diagram 1**.

## Step

# 2.



**Diagram 2**

## Join at the shoulders:

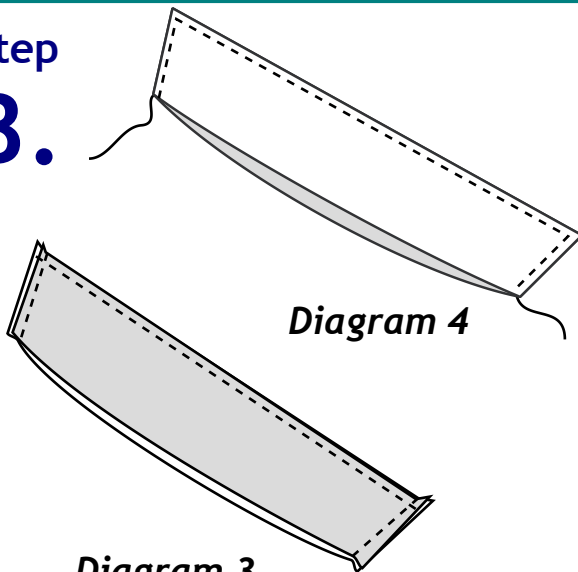
Join the two back pieces with the front piece by sewing along the shoulders.

*The grey is the wrong side of the fabric.*

You should have what is shown in **Diagram 2**.

## Step

# 3.



**Diagram 3**

## Make the collar:

Sew two collar pieces **right sides together**, along two seams as shown in **Diagram 3**.

Turn **right side out**, so seams are on inside, as shown in **Diagram 4**.

Sew around outer edge of collar, as shown in **Diagram 4** - leave raw edge open.

Step

4.

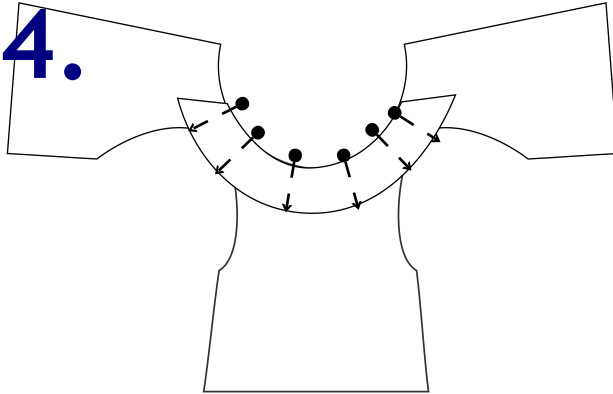


Diagram 5

Join collar to shirt - step 1:

Pin the collar to the right side of the shirt, as shown in *Diagram 5*.

You may need to ease the shirt around the curve of the collar.

Step

5.

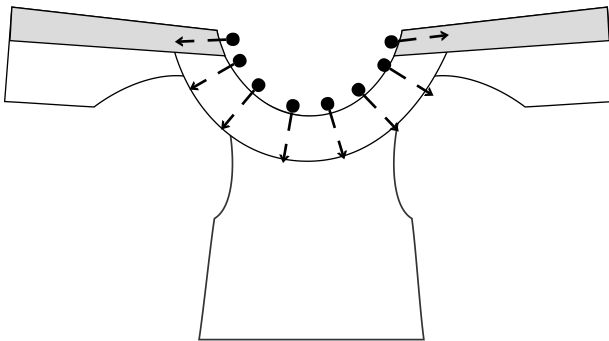


Diagram 6

Join collar to shirt - step 2:

Fold the edges of the shirt over at the fold line indicated on the pattern - they should overlap the ends of the collar. The wrong side should now be showing.

Pin the folded-over edges down.

You should have what's shown in *Diagram 6*.

Step

6.

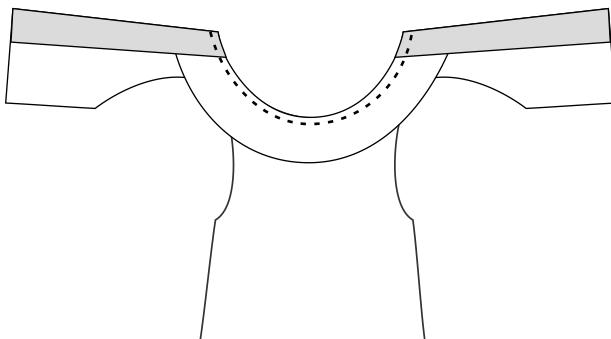


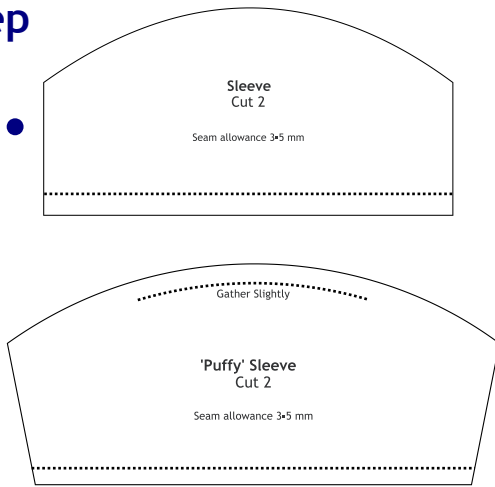
Diagram 7

Join collar to shirt - step 3:

Stitch around neckline.

You should have what's shown in *Diagram 7*.

**Step**  
**7.**



**Diagram 8**

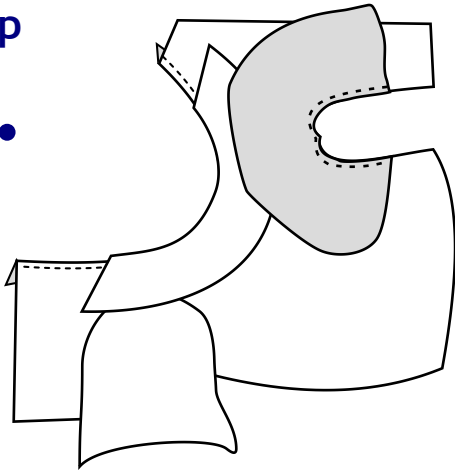
**Attach sleeves:**

Fold the hem of the sleeves over and stitch as shown in *Diagram 7*.

The **long and short sleeves** are the same in how the hem is folded. The only difference in the sleeves are the lengths.

The **'Puffy' sleeve** is a little different in that it is shaped to allow for the puffiness. When the hem is folded over, the odd shape of the sleeve allows for the fold.

**Step**  
**8.**

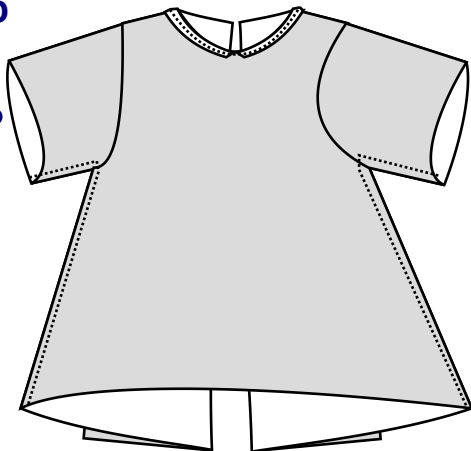


**Diagram 9**

Pin sleeves inside armholes - you may have to ease them in - then sew.

You should have what is shown in *Diagram 9*.

**Step**  
**9.**



**Diagram 10**

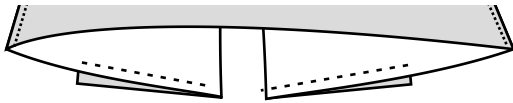
Sew along sleeve and along side shirt seam, as shown in *Diagram 10*.

Step

10.

### Finishing the shirt:

Pin, then sew along the bottom of the folded-over section, as shown in *Diagram 11*.



*Diagram 11*

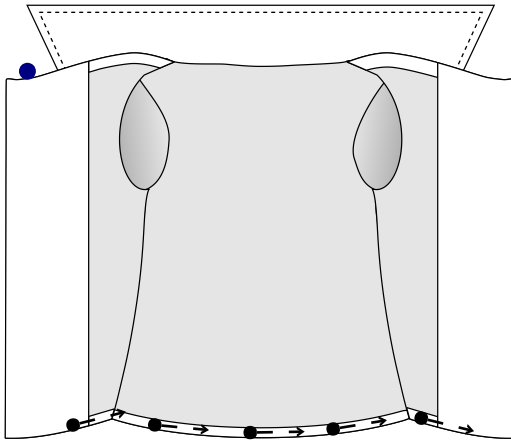
Step

11.

Turn shirt correct way out - facings should appear as in *Diagram 12*.

*(Remember - the grey represents the wrong side of the fabric!)*

The bottom hem should fold up into the shirt- press with iron and pin.



*Diagram 12*

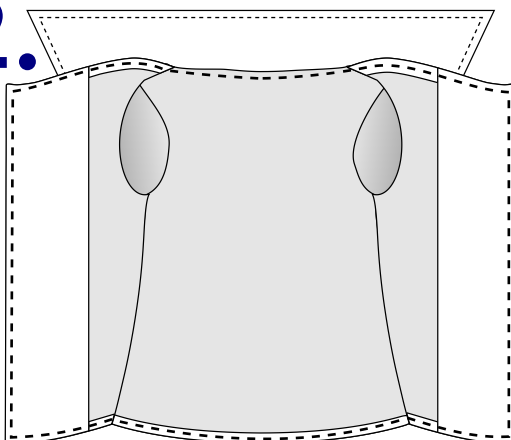
Step

12.

Sew around where indicated in *Diagram 13* - the heavy dashed line.

**Finish** the shirt by sewing on buttons, snaps or velcro dots.

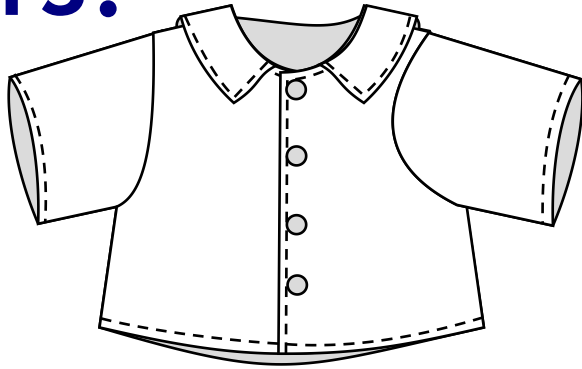
If you're feeling clever, make button holes for the shirt - but if do this, I suggest ironing some light interfacing into the wrong side of the facing - see pattern for size of interfacing.



*Diagram 13*

Step

**13.**



*Diagram 14*

**The completed shirt:**

You should now have something similar to the shirt in *Diagram 14*.