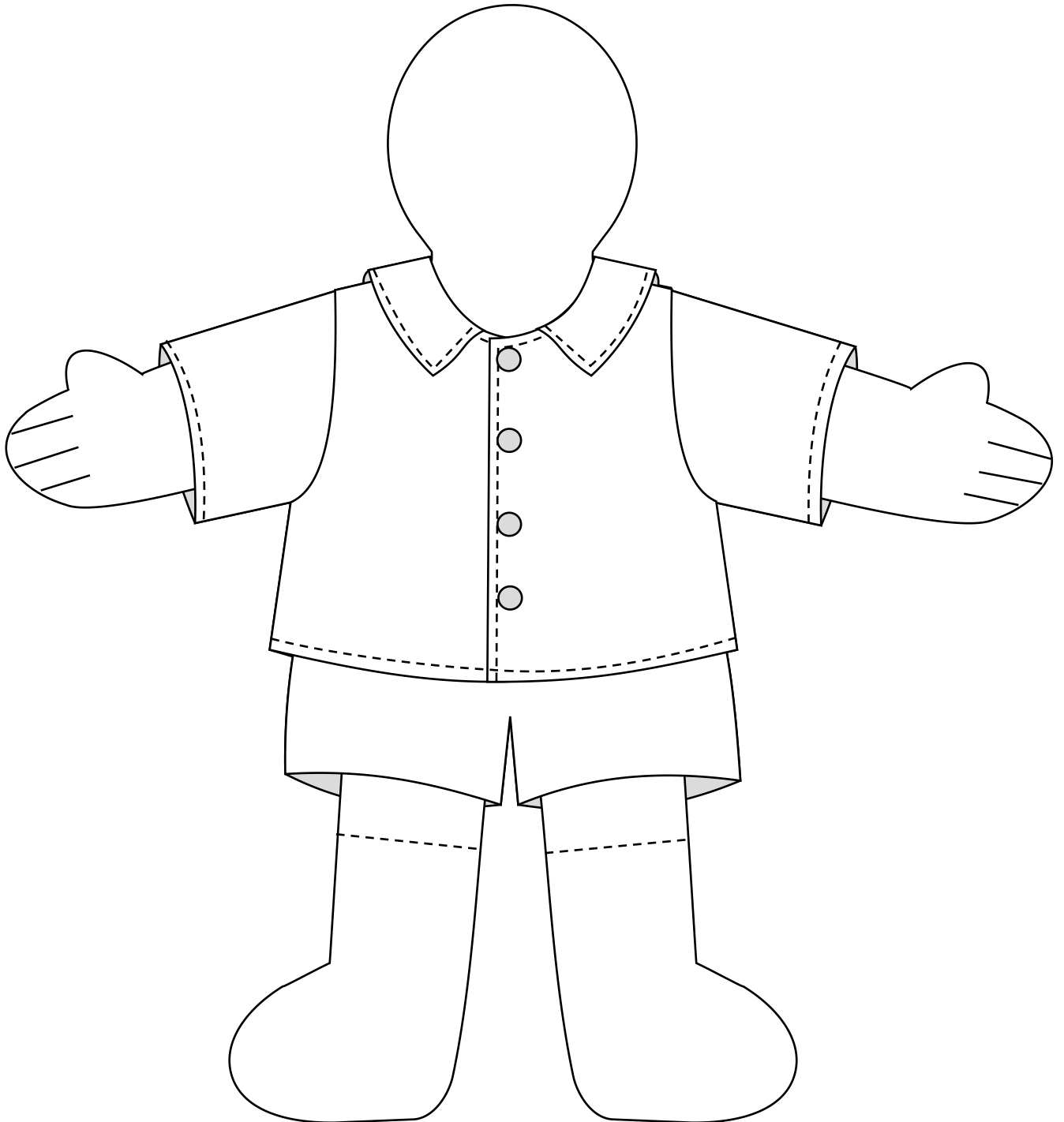


How to...

Basic Rag Doll Shirt Tutorial

© 2007 Teresa Brady
"Things of Cloth"



make a simple doll shirt

Step

1.

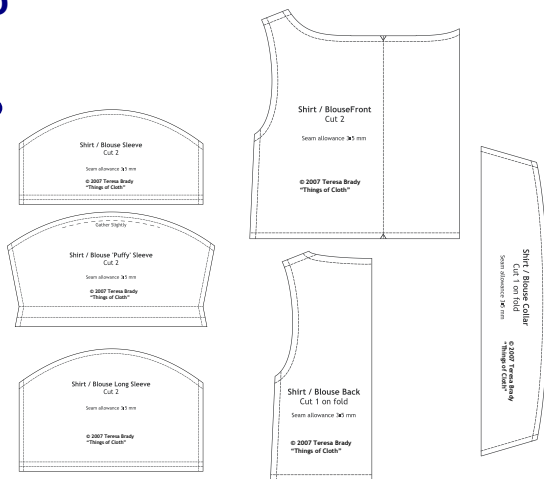


Diagram 1

Cut out the pattern pieces:

Cut 1 of the shirt back on the fold.

Cut 2 of the shirt front.

Cut 2 of the sleeves (after choosing what style of sleeve you want!).

You should have what is shown in *Diagram 1*.

Step

2.

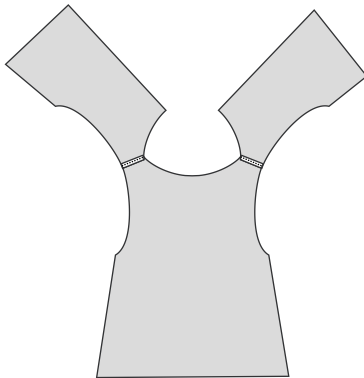


Diagram 2

Join at the shoulders:

Join the two back pieces with the front piece by sewing along the shoulders.

The grey is the wrong side of the fabric.

You should have what is shown in *Diagram 2*.

Step

3.

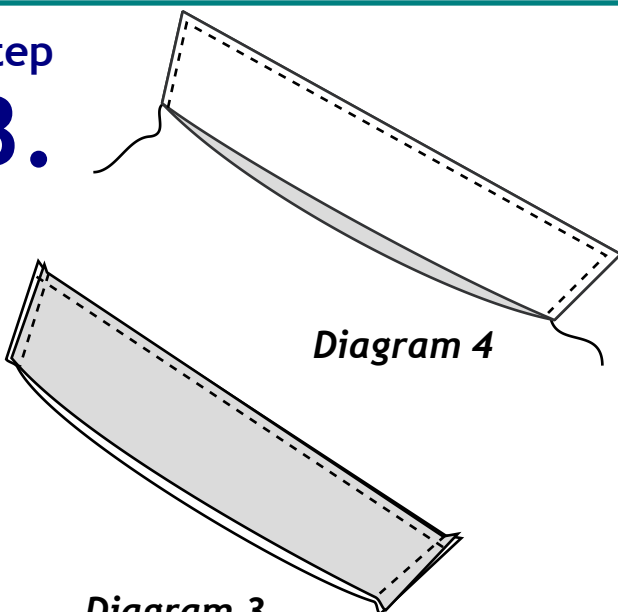


Diagram 3

Make the collar:

Sew two collar pieces right sides together, along two seams as shown in *Diagram 3*.

Turn right side out, so seams are on inside, as shown in *Diagram 4*.

Sew around outer edge of collar, as shown in *Diagram 4* - leave raw edge open.

Step

4.

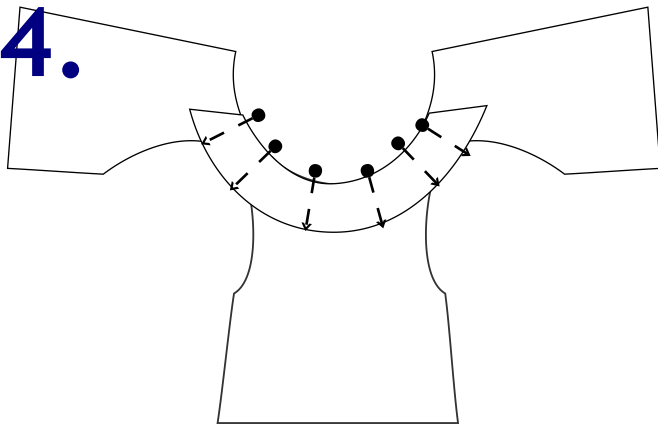


Diagram 5

Join collar to shirt - step 1:

Pin the collar to the right side of the shirt, as shown in *Diagram 5*.

You may need to ease the shirt around the curve of the collar.

Step

5.

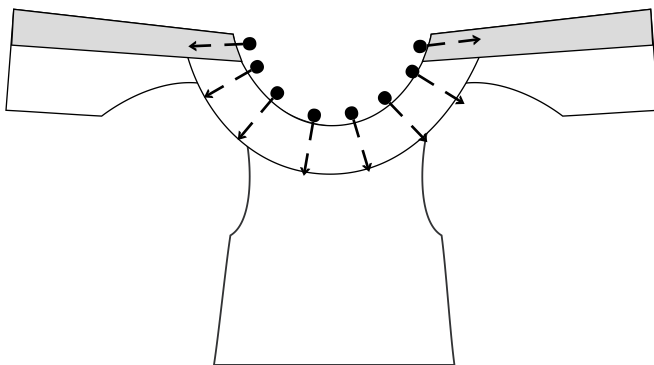


Diagram 6

Join collar to shirt - step 2:

Fold the edges of the shirt over at the fold line indicated on the pattern - they should overlap the ends of the collar. The wrong side should now be showing.

Pin the folded-over edges down.

You should have what's shown in *Diagram 6*.

Step

6.

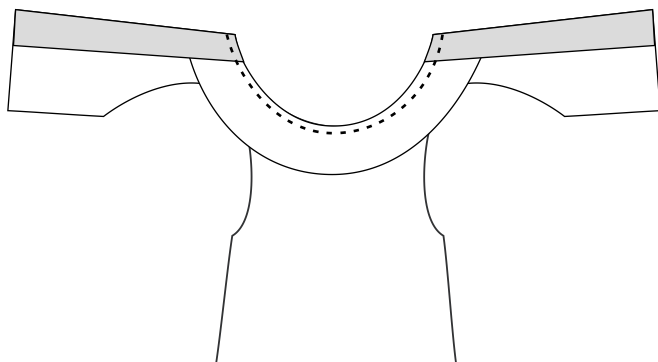


Diagram 7

Join collar to shirt - step 3:

Stitch around neckline.

You should have what's shown in *Diagram 7*.

Step

7.

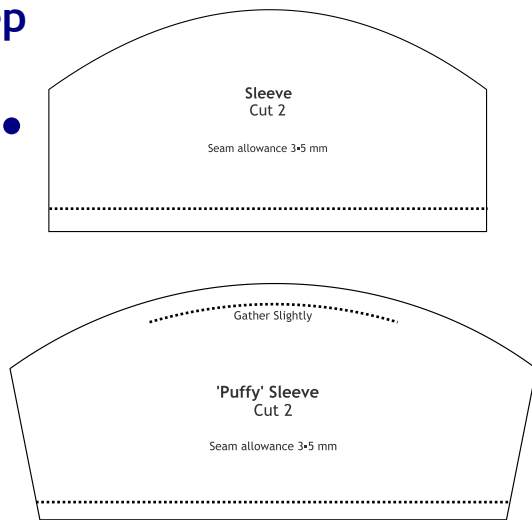


Diagram 8

Attach sleeves:

Fold the hem of the sleeves over and stitch as shown in *Diagram 7*.

The **long and short sleeves** are the same in how the hem is folded. The only difference in the sleeves are the lengths.

The **'Puffy' sleeve** is a little different in that it is shaped to allow for the puffiness. When the hem is folded over, the odd shape of the sleeve allows for the fold.

Step

8.

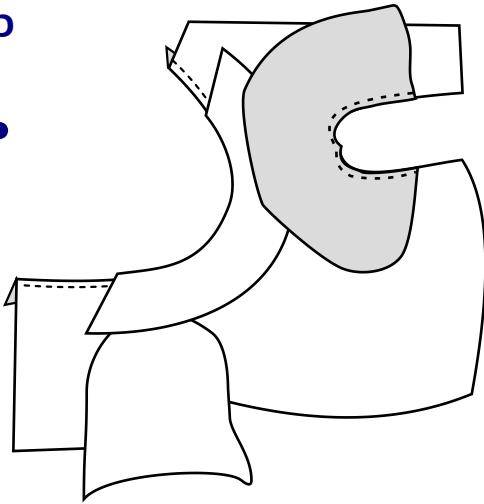


Diagram 9

Pin sleeves inside armholes - you may have to ease them in - then sew.

You should have what is shown in *Diagram 9*.

Step

9.

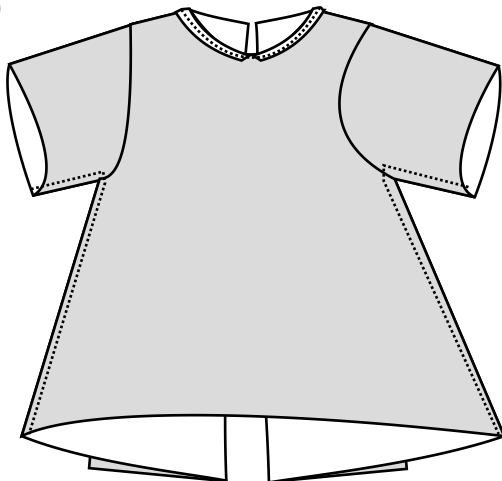


Diagram 10

Sew along sleeve and along side shirt seam, as shown in *Diagram 10*.

Step

10.

Finishing the shirt:

Pin, then sew along the bottom of the folded-over section, as shown in *Diagram 11*.

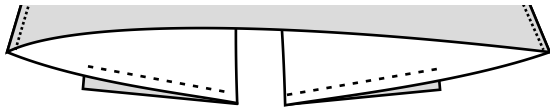


Diagram 11

Step

11.

Turn shirt correct way out - facings should appear as in *Diagram 12*.

(Remember - the grey represents the wrong side of the fabric!)

The bottom hem should fold up into the shirt - press with iron and pin.

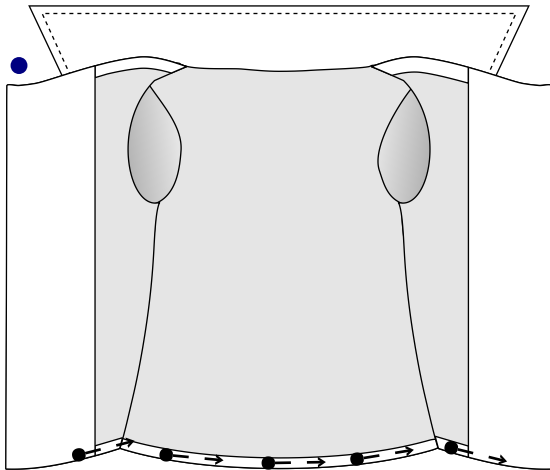


Diagram 12

Step

12.

Sew around where indicated in *Diagram 13* - the heavy dashed line.

Finish the shirt by sewing on buttons, snaps or velcro dots.

If you're feeling clever, make button holes for the shirt - but if do this, I suggest ironing some light interfacing into the wrong side of the facing - see pattern for size of interfacing.

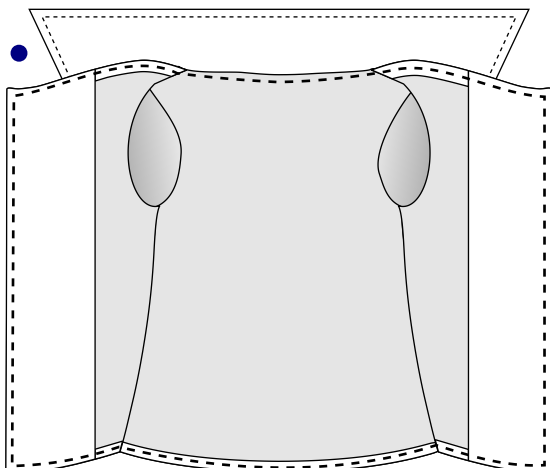


Diagram 13

Step

13.

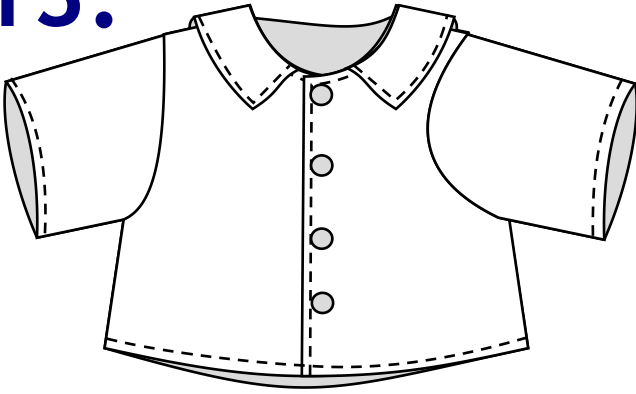


Diagram 14

The completed shirt:

You should now have something similar to the shirt in *Diagram 14*.